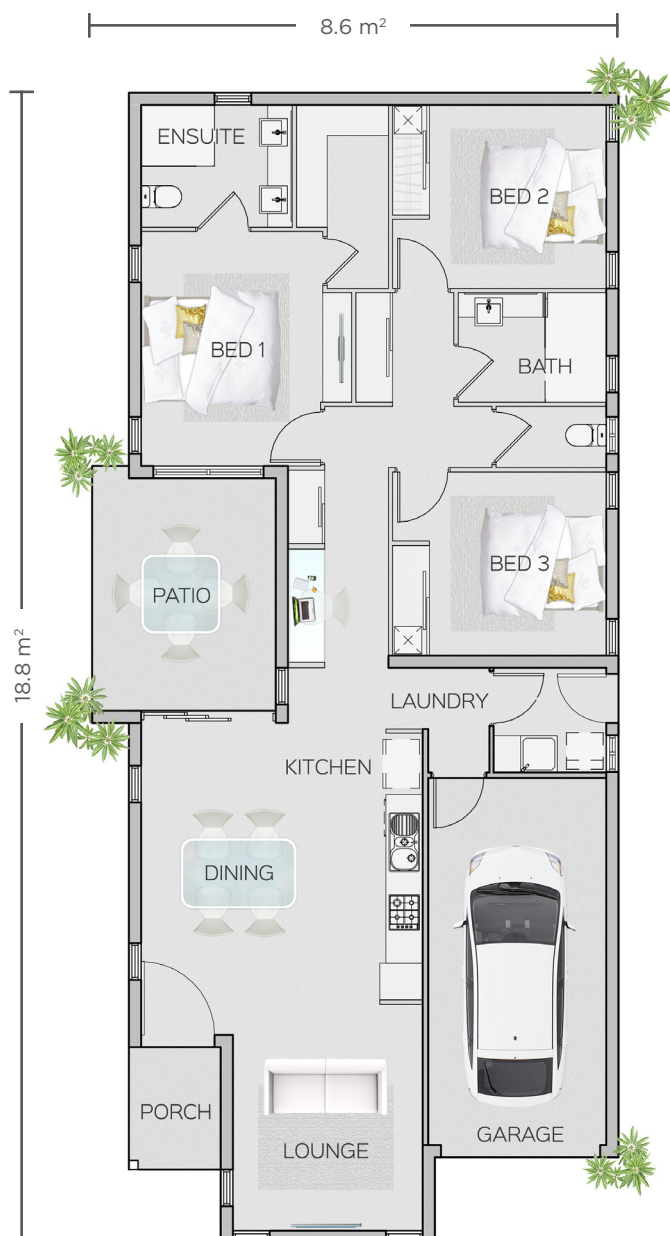


# THE MARY-DRAPER

3 | 2 | 1



145m<sup>2</sup>

## STANDARD INCLUSIONS

- LED downlights
- Security screens
- Split system A/C
- Energy efficient appliances
- Frameless fixed panel shower screen and mirrors
- Gas stove, hot water and BBQ point
- Clothesline
- Tiled throughout (including patio)
- Stone kitchen benchtops
- Glass splashback to kitchen
- Exposed aggregate driveway
- \$20,000 first home buyers grant

## GET IN TOUCH TODAY

P: (07) 4033 7476

E: [enquire@duceconstructions.com.au](mailto:enquire@duceconstructions.com.au)

W: [duceconstructions.com.au](http://duceconstructions.com.au)

f [/duceconstructions.com.au](https://www.facebook.com/duceconstructions.com.au)

**DUCE**  
**CONSTRUCTIONS**